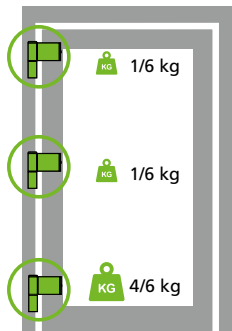
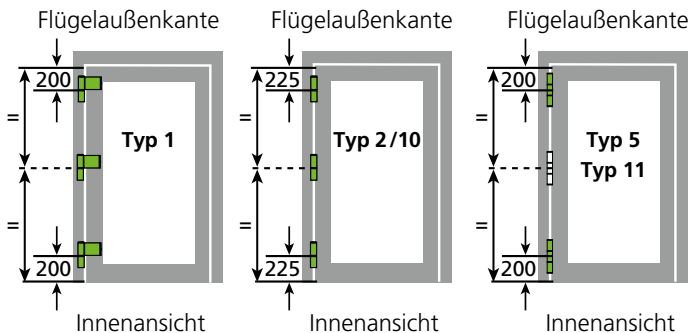


SCHÜCO

Bänder für Kunststofftüren



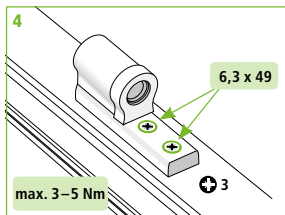
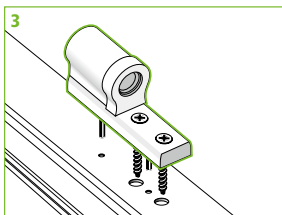
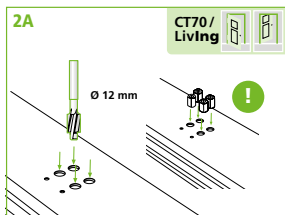
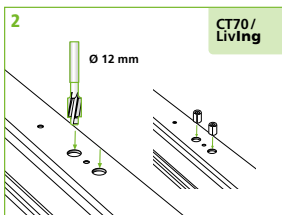
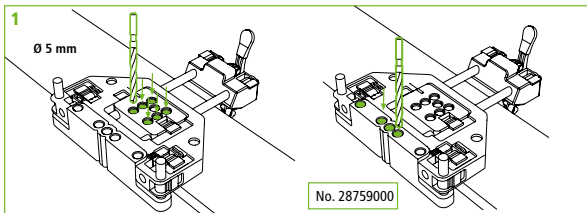
Typ	Farbe	VE	System		
			CT70	Living	CT70 und Living
1	RAL9016	1	25843300	25843900	
		24	25843200	25844000	
	RAL9005	1	25843400	25844100	
		24	–	21591000	
	RAL9001	1	25843700	21526000	
	F9	1	25843500	25844200	
F1	1	25843600	25844300		
2	RAL9016	1	25841800	25841800	25841800
		24	25842100	25842100	25842100
	RAL9005	1	25841900	25841900	25841900
	RAL9001	1	–	–	–
	F9	1	25842000	25842000	25842000
	F1	1	25842200	25842200	25842200
10	RAL9016	1	29506500	29506500	29506500
	RAL9005	1	29506600	29506600	29506600
	RAL9001	1	29506700	29506700	29506700
	F9	1	29506800	29506800	29506800
	F1	1	29506900	29506900	29506900
5	RAL9016	1	29506000	29506000	29506000
	RAL9005	1	29506100	29506100	29506100
	RAL9001	1	29506200	29506200	29506200
	F9	1	29506300	29506300	29506300
	F1	1	29506400	29506400	29506400
11	RAL9016	1	20349900	20349900	20349900
	RAL9005	1	20350100	20350100	20350100
	RAL9001	1	20350200	20350200	20350200
	F9	1	20350400	20350400	20350400
	F1	1	20350500	20350500	20350500



Band Typ	Maximales Türgewicht
1	120
2/10	80
5	120
11	100

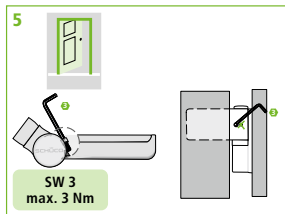
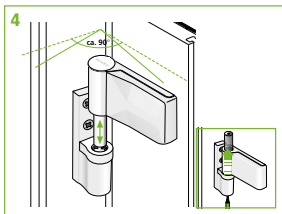
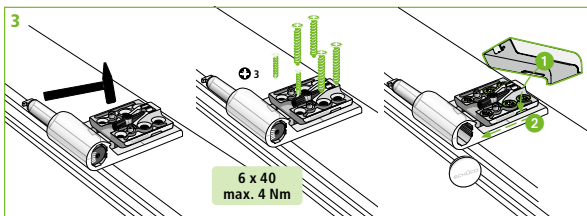
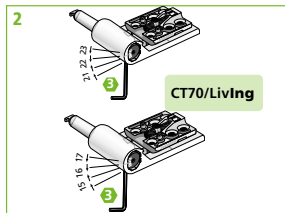
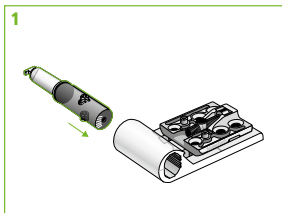
SCHÜCO

Typ 1



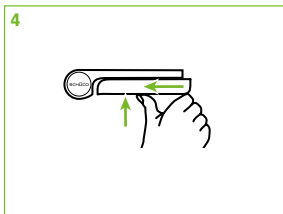
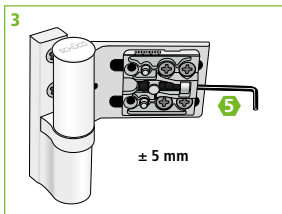
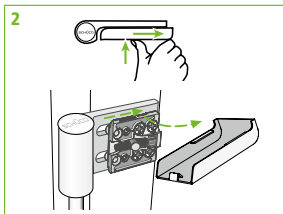
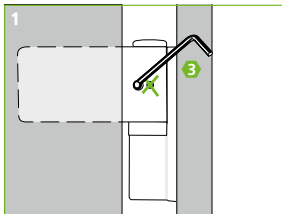
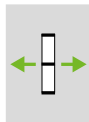
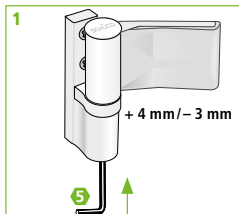
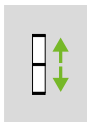
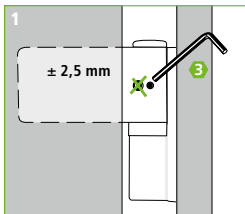
SCHÜCO

Typ 1



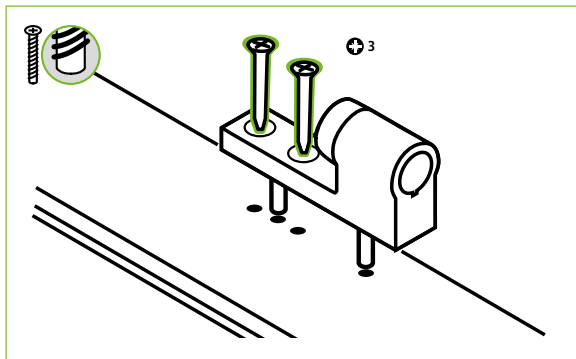
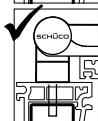
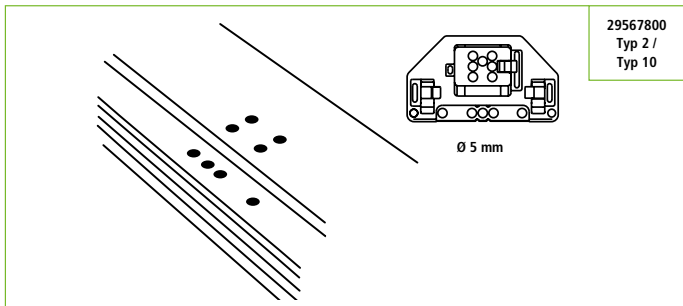
SCHÜCO

Typ 1



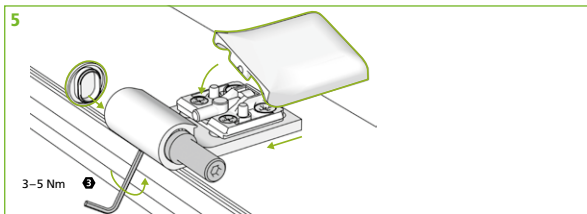
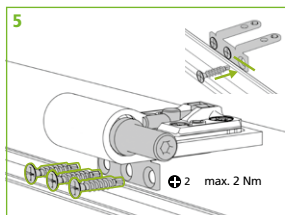
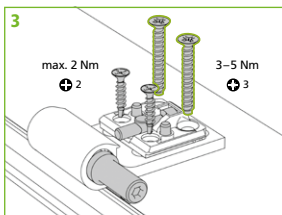
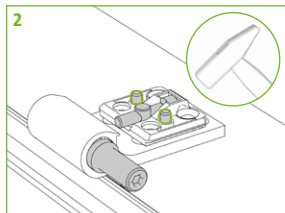
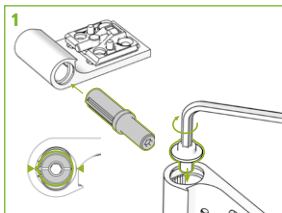
SCHÜCO

Typ 2 / Typ 10



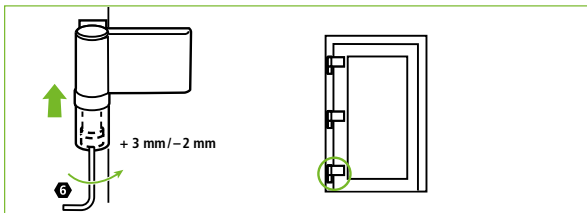
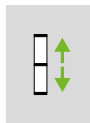
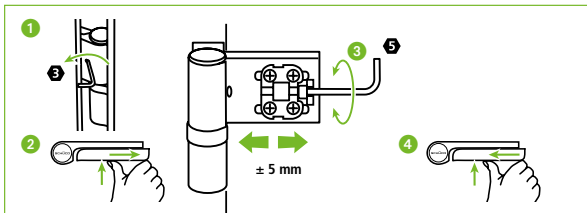
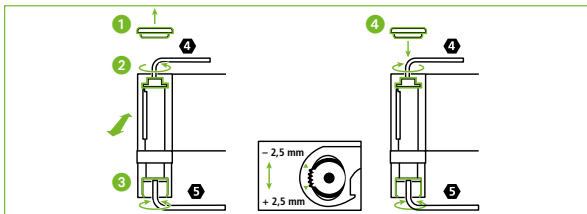
SCHÜCO

Typ 2 / Typ 10

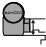



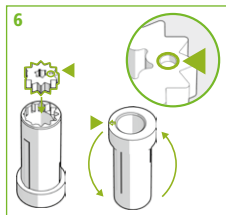
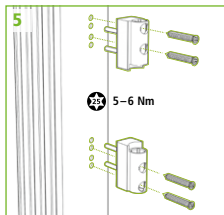
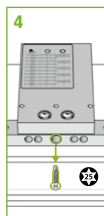
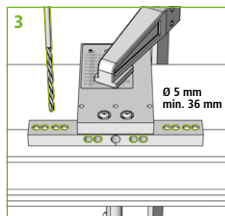
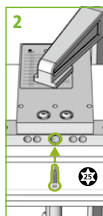
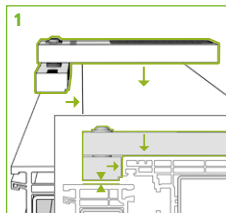
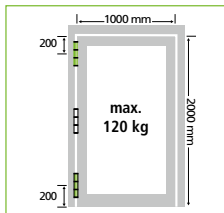
SCHÜCO

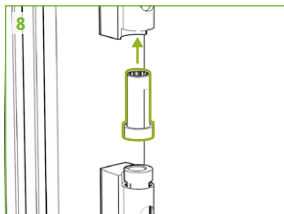
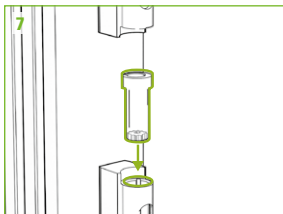
Typ 2 / Typ 10



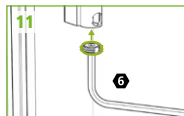
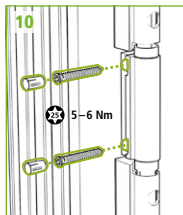
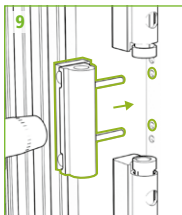
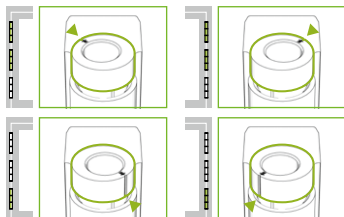
Bohrlehre 29567800

		
	0,5 mm	1,0 mm
16,5	0	0
17,0	1	0
17,5	0	+
18,0	1	+
18,5	0	+
19,0	1	+
19,5	0	+
20,0	1	+
20,5	0	+
21,0	1	+
21,5	0	+
22,0	1	+
22,5	0	+
23,0	1	+
23,5	0	+
24,0	1	+
24,5	0	+
25,0	1	+
25,5	0	+
26,0	1	+



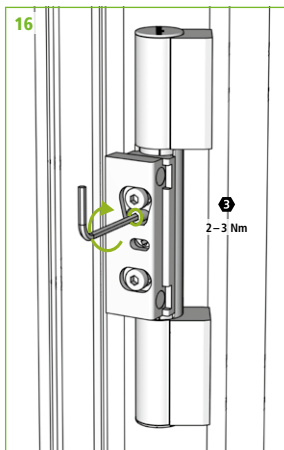
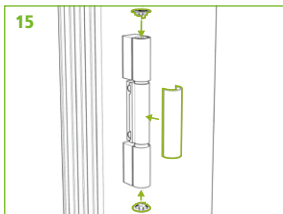
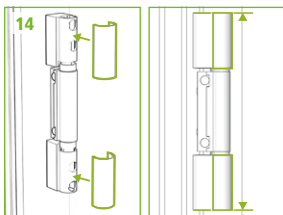
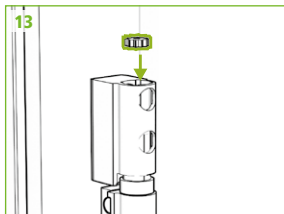
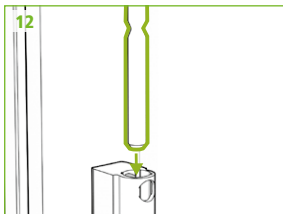


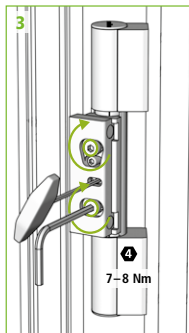
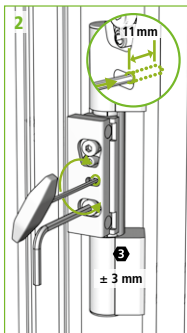
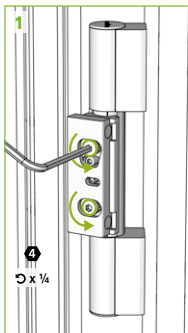
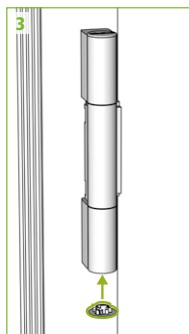
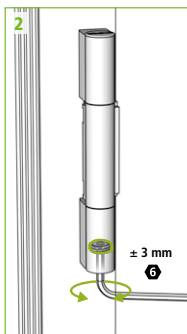
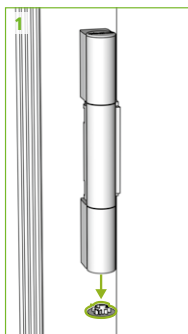
Markierungen am
Buchsenkragen zeigen
oben **und** unten:

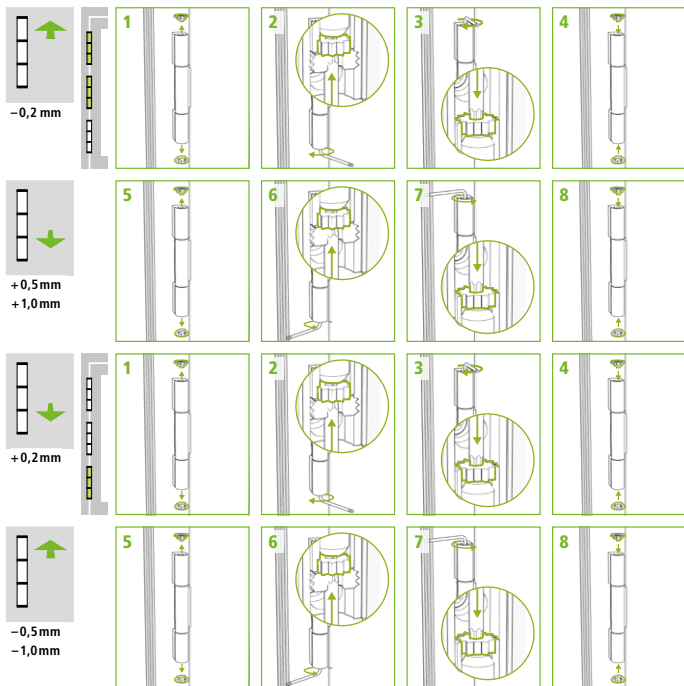


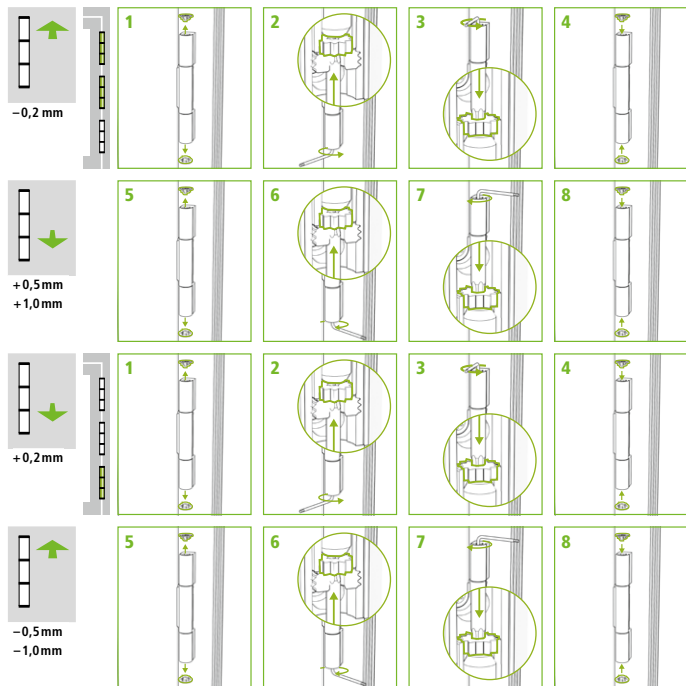
SCHÜCO

Typ 5



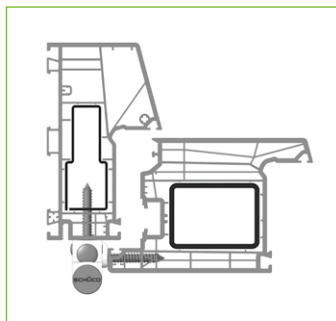
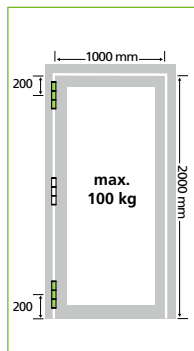
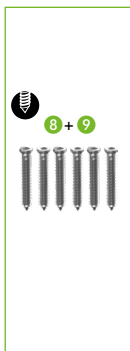




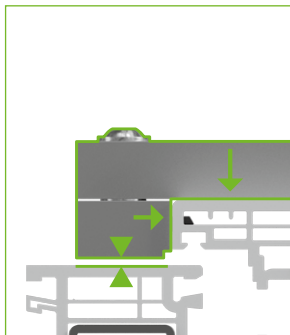
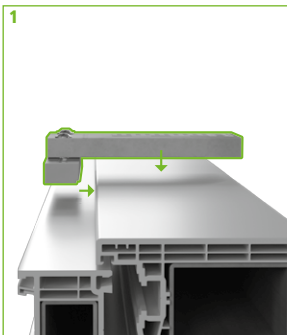


SCHÜCO

Typ 11

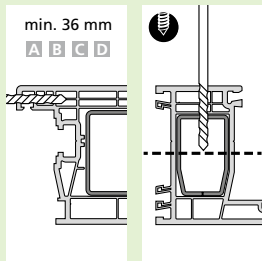
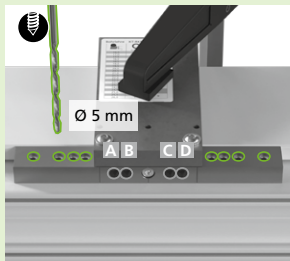


Lagerbuchse aus wartungs-
freiem Kunststoff
– keinesfalls schmieren!

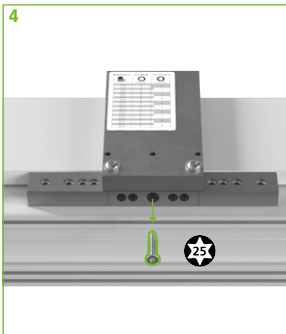




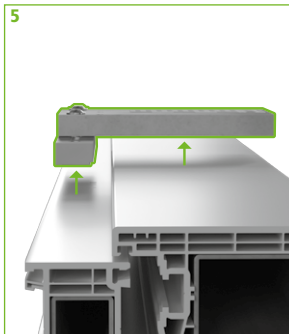
3

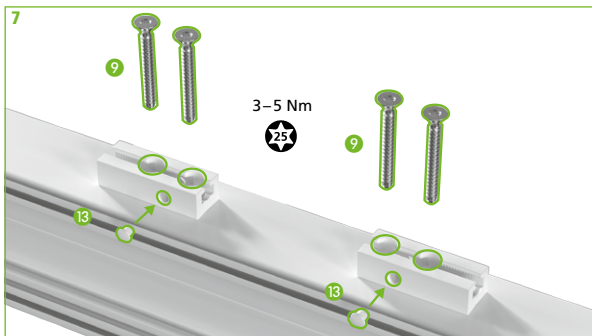
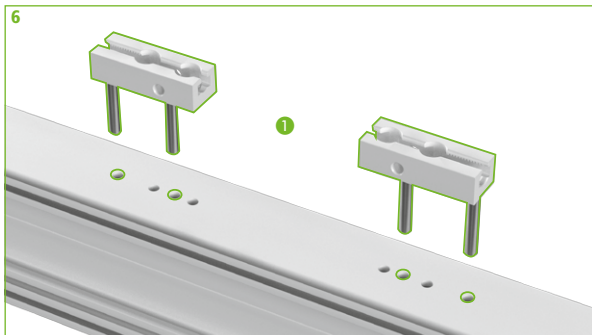


4



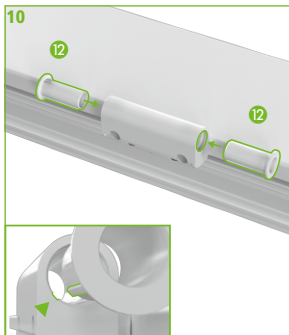
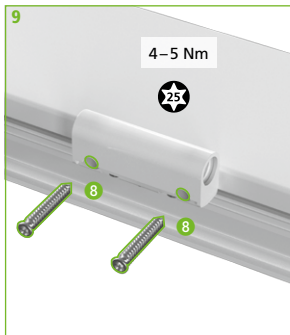
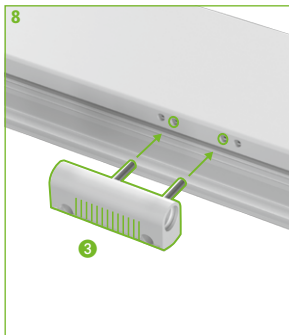
5

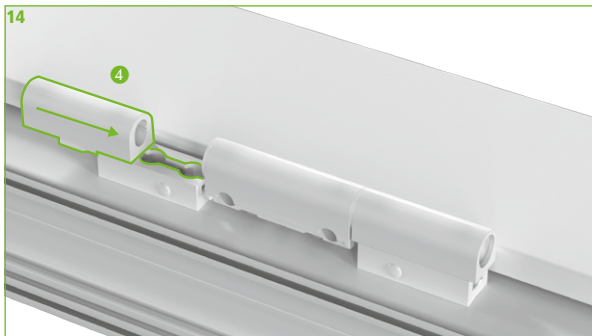
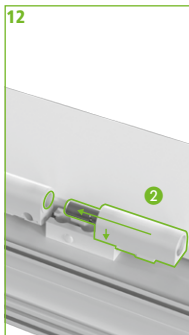


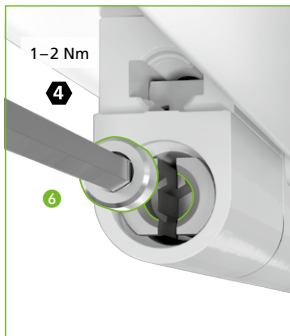
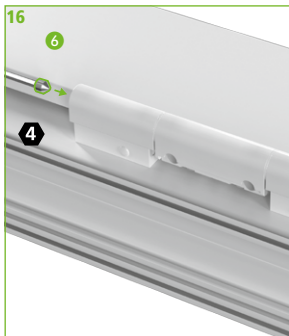
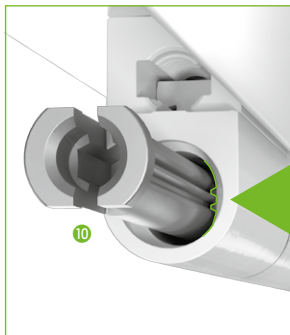
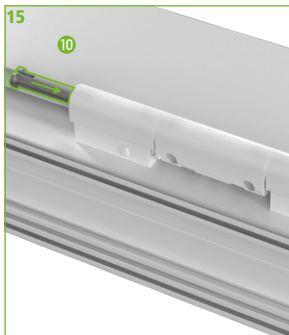


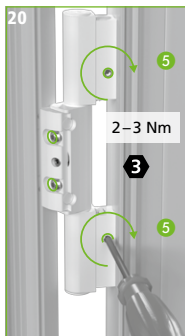
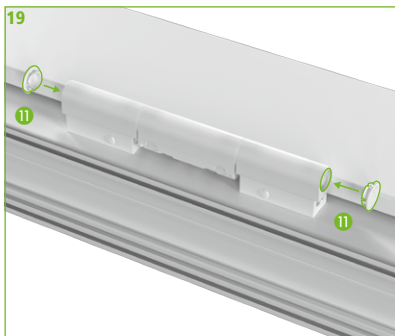
SCHÜCO

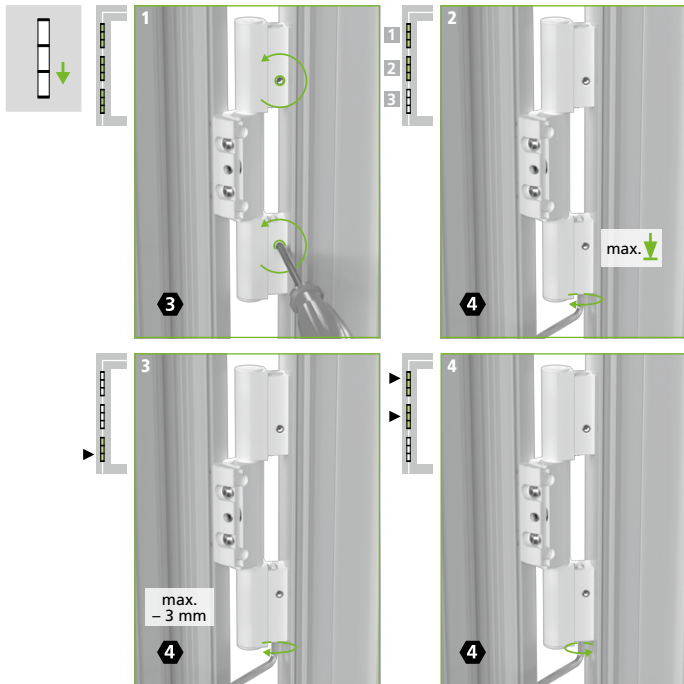
Typ 11

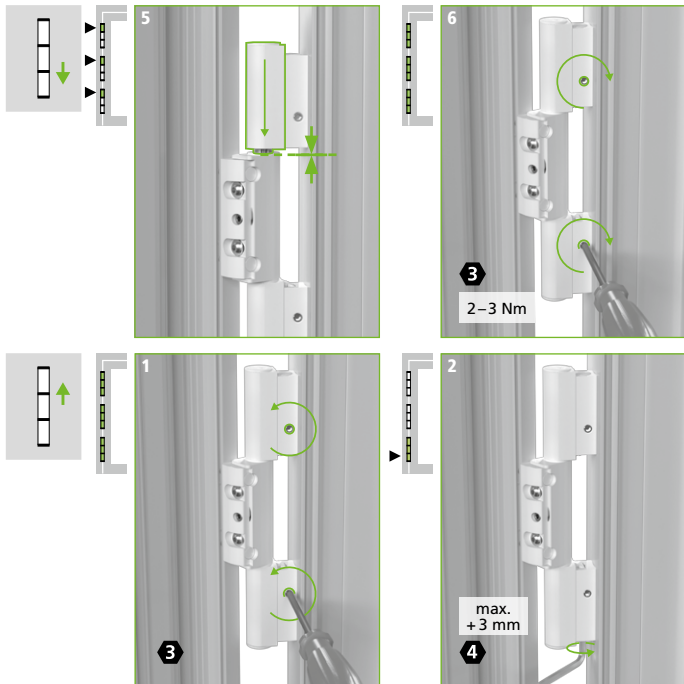


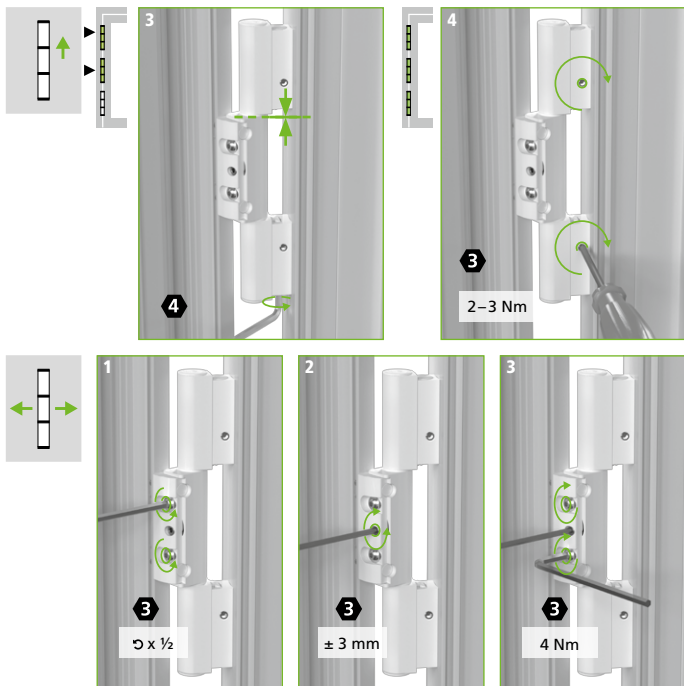






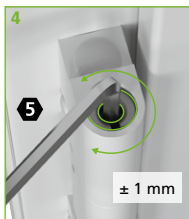
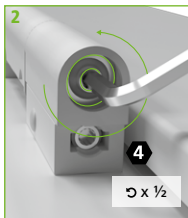






SCHÜCO

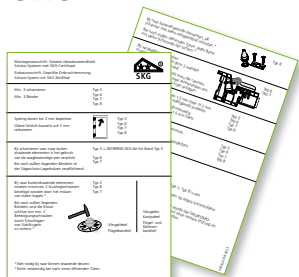
Typ 11



SCHÜCO

Bänder für Kunststofftüren

Bitte beachten Sie die Einbauvorschriften auf dem Beilegezettell!



SCHÜCO

Schüco Polymer Technologies KG

Selauer Straße 155 · 06667 Weissenfels

Phone +49 (0) 3443 342 - 101 · Fax +49 (0) 3443 342 - 299 · E-mail info@schueco.com